

## NUMERICAL SEQUENCE

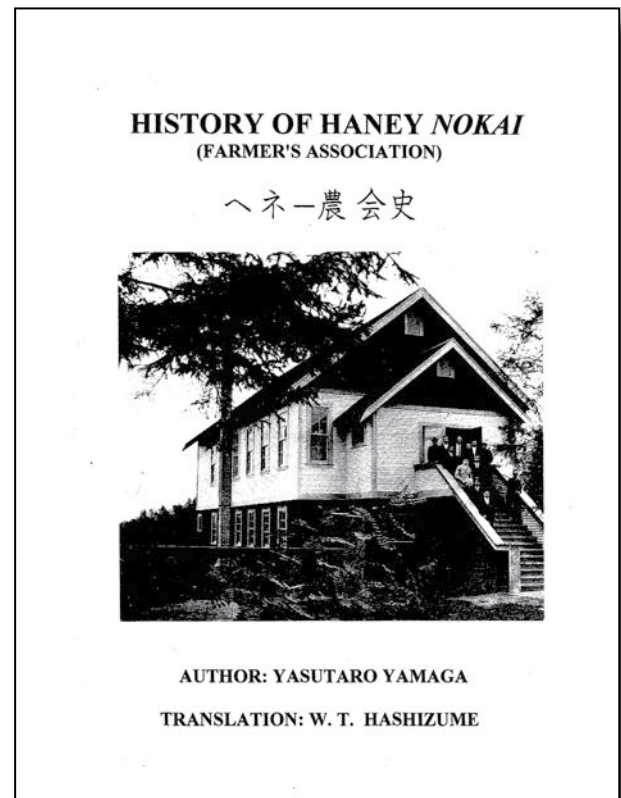
- 1 Shuichi FUKIJNAGA (Rn)
- 2 Kiyoshi & Takasuji UMETSU (Ru)
- 3 Yasutaka INOUYE (Ru)
- 4 Sannosuke WAKAHARA (Ru)
- 5 Kazuo WADA (Ru)
- 6 Toshiaki WADA (Ru)
- 7 T. TAHARA (Ru)
- 8 Rinzo TAHARA (Ru)
- 9 Mitsu NIKAIDO (Ru)
- 10 Yasugoro TOKUYASU (Wh)
- 11 Wakaichi ITAYA(Wh)
- 12 Yonezo MIKI (Wh)
- 13 Yasuzo SHOJI(Wh)
- 14 Sukezo IWAMOTO (Wh)
- 15 Takaaki SHIGEMI (Wh)
- 16 Matsuichi NABETA (Wh)
- 17 Tsugio IWAMOTO (Wh)
- 18 Takekuma YAKASHIRO (Wh)
- 19 K. TANIGUCHI & T. YAKASHIRO (Wh)
- 20 Haruo ICHIKAWA(Wh)
- 21 Shozaemon YAMADA (Wh)
- 22 Fusanosuke OKUBO (Wh)
- 23 Sakutaro FUJINO (Wh)
- 24 Hikosaku FUJITA & Rikima NAKANO (Wh)
- 25 Kichimatsu MUKAIDA (Wh)
- 26 Konosuke SHONO(Wh)
- 27 Goro & Suzuko HORI (Wh)
- 28 Tadahiko IINUMA (Wh)
- 29 Kizo NATSUHARA (Wh)
- 30 Geda SHIN (Wh)
- 31 Yoshiko & Kui MIYANAGA (Wh)
- 32 Keizo & Wai SAMESHIMA (Wh)
- 33 Tomihei FUJIWARA (Wh)
- 34 Takeji TSUJITA (Wh)
- 35 Kinue & Moichi KOSAKA (Wh)
- 36 Kesaguma UCHIMARU (Wh)
- 37 Yohsnori GORYO (Wh)
- 38 Sajiyu KATO (Wh)
- 39 Katsujiro KATO & Shingo SATO (Wh)
- 40 Sadikichi OGAWA (Wh)
- 41 Yoshihiko IKEDA & Takeji TSUJITA (\ Wh)
- 42 F. MORISHIGE & S. NISHIKAWA (Wh)
- 43 Kesaguma UCHIMARU (Wh)
- 44 Zentaro SHIN (Wh)
- 45 F. MORISHIGE & S. NISHIKAWA (Wh)
- 46 Kesaguma UCHIMARU (Wh)
- 47 Kintaro KOBAYASHI (Wh)
- 48 Kume & Teizo HIDAHA (Wh)

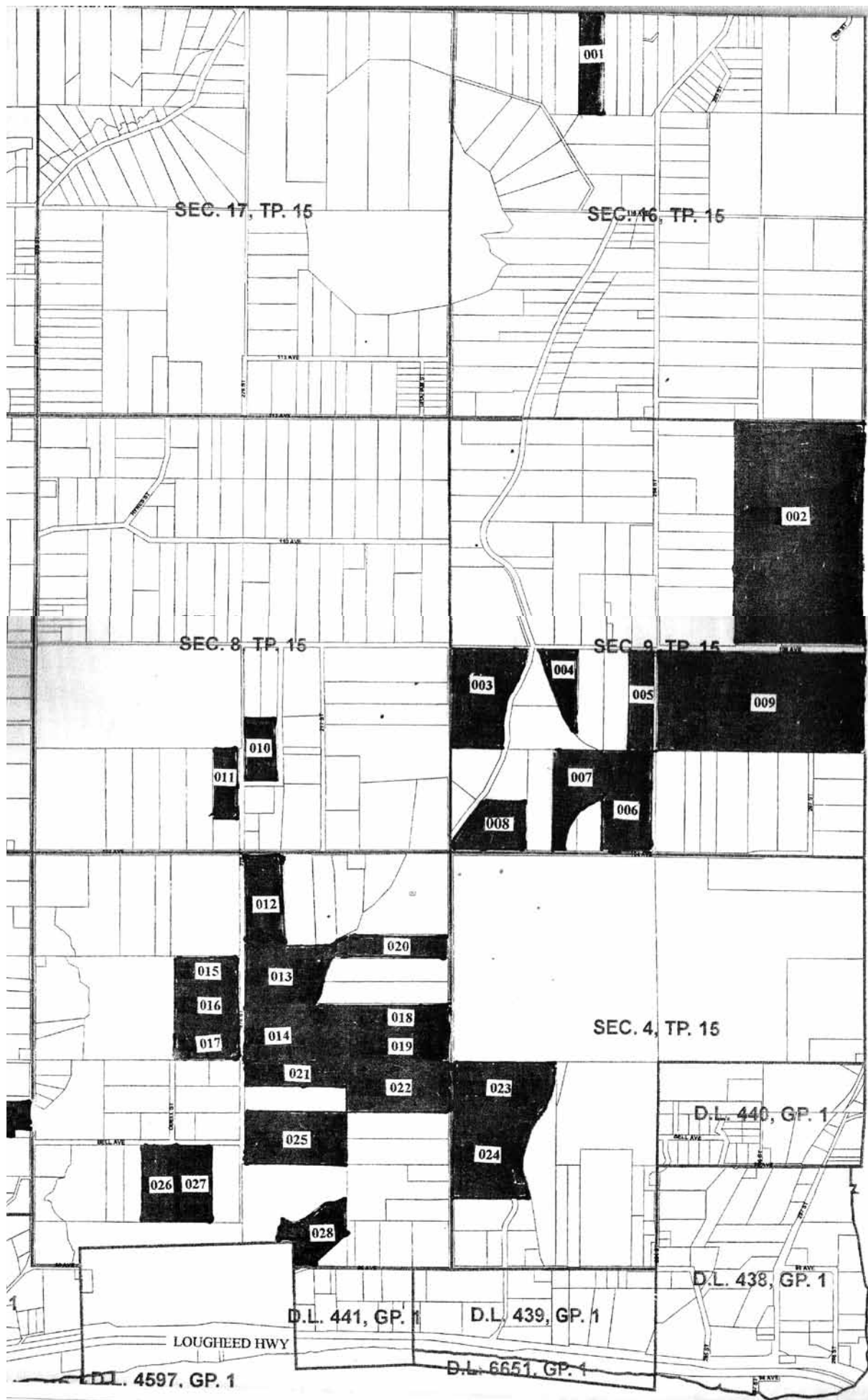
## JAPANESE LAND OWNERS IN RUSKIN AND WHONNOCK BEFORE THE SECOND WORLD WAR

Before W. T. (Bill) Hashizume published his translation of Yatsuro Yamaga's *History of Haney Nokia (farmers association)* he used municipal tax assessment rolls and information gathered by John Mark Read for his 1971 MA Thesis as the basis for a map showing the properties once owned by Japanese settlers.

Following are copies of parts of the original map showing the properties in Ruskin and Whonnock.

Hashizume used the information he collected to draw maps for the book as well, but they are not as simple to read as the original map created by the staff at Maple Ridge municipal hall.





SEC. 17, TP. 15

SEC. 16, TP. 15

SEC. 8, TP. 15

SEC. 9, TP. 15

SEC. 4, TP. 15

001

002

003

004

005

009

011

010

007

006

008

012

020

015

013

018

016

014

019

017

021

022

023

025

024

026

027

028

D.L. 440, GP. 1

D.L. 438, GP. 1

D.L. 441, GP. 1

D.L. 439, GP. 1

D.L. 4597, GP. 1

D.L. 6651, GP. 1

LOUGHEED HWY

MILL AVE

MILL AVE

MILL AVE

