



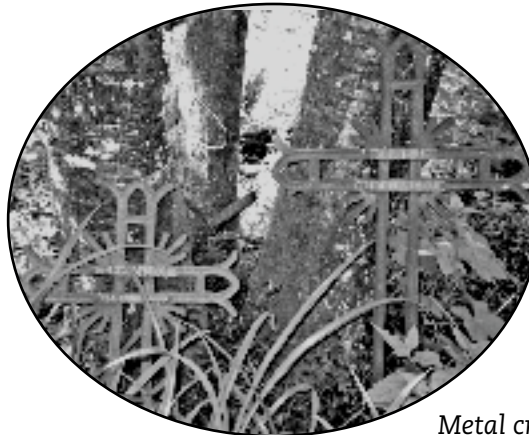
A Bit of Whonnock History Calendar 2005



This map shows a section of land bounded by Dowdney Trunk Road to the north and Crescent Island to the south. The area is divided into several lots, some numbered (e.g., 434, 433, 440, 441). A prominent feature is a circular lot labeled "POND LAKE". Streets shown include 272nd Street and 286th Street. The map also includes a grid system with numbers 19, 20, 21 along the top and 16, 17, 18 along the left side.

Originally the Whonnock Reserve would have covered 2,000 acres, but in the end only 92 acres were granted. In 1881, 16 families and some 50 people lived on the Reserve.

In 1885, Lot 433 was granted to Robert Robertson, and, a few years later, an additional 180 acres, Lot 434, were granted to his son.



A black and white studio portrait of a family of three. On the left, a woman stands wearing a light-colored, high-collared dress with puffed sleeves and a dark hat adorned with a large feather. She rests her hand on a small table covered with a fringed cloth. In the center, a man sits in a dark suit, holding a baby wrapped in a white cloth on his lap. The baby is looking towards the camera. The background is a light, draped studio backdrop.

Read and download Whonnock history from our community Web site <whonnock.ca>.

JANUARY 2005

SUNDAY	MONDAY	TUESDAY	WEDNESDAY	THURSDAY	FRIDAY	SATURDAY
						1
2	3	4	5	6	7	8
9	10	11	12	13	14	15
16	17	18	19	20	21	22
23	24	25	26	27	28	29
30	31					

A BIT OF WHONNOCK HISTORY

Whonnock General Store 1885 – 1916



Noble Oliver, Whonnock's first shopkeeper and postmaster, seen here with his wife, Catherine Robinson, in front of their home on what is now 272nd Ave.

Levi C. York and his daughter Gwen.
L.C. York bought the store in 1891 and was postmaster from 1894 to 1906.



THE CREATION of the white settlement called Whonnock started with the coming of the railroad and a railway station. Noble Oliver built the first General Store here in the early 1880s, and the Whonnock post office started in 1885. The site of the store is now under the Lougheed Highway. The building burned down in March, 1916. The right part of the building is where the shopkeeper and his family lived.

FEBRUARY 2005

SUNDAY	MONDAY	TUESDAY	WEDNESDAY	THURSDAY	FRIDAY	SATURDAY
		1	2	3	4	5
6	7	8	9	10	11	12
13	14	15	16	17	18	19
20	21	22	23	24	25	26
27	28					

A BIT OF WHONNOCK HISTORY

Whonnock Post Office

IN THE SPRING OF 1916, only a few weeks after a fire destroyed the Whonnock General Store, the post office found a new home.

The photo to the right shows how close the post office was to Showler's store (1926).

In the 1930s the post office was rebuilt at its present location on the west side of the lot as is shown (bottom right) in a 1950s photo.



MARCH 2005

SUNDAY	MONDAY	TUESDAY	WEDNESDAY	THURSDAY	FRIDAY	SATURDAY
		1	2	3	4	5
6	7	8	9	10	11	12
13	14	15	16	17	18	19
20	21	22	23	24	25	26
27	28	29	30	31		

A BIT OF WHONNOCK HISTORY

Showler's Store on River Road

In 1919-1920 Nils Nilson built the store on speculation.

In 1921 Showler opened the hardware and groceries store there. The store became part of the Red & White chain and survived until the 1970s.

After decades of neglect the building was given new life in 1992 as McFly's Feed Delivery.



Showler with his dog Smitty in front of his store. Note the gasoline pump and the condition of the road.



Fred Showler with a good catch. This photo dates back to the early 1920s. A porch was added to the building.



The bookmobile in front of the post office with the store in the background. 1929.



APRIL 2005

SUNDAY	MONDAY	TUESDAY	WEDNESDAY	THURSDAY	FRIDAY	SATURDAY
					1	2
3	4	5	6	7	8	9
10	11	12	13	14	15	16
17	18	19	20	21	22	23
24	25	26	27	28	29	30

A BIT OF WHONNOCK HISTORY

Ladies Club & Whonnock Memorial Hall

A LADIES CLUB was formed in Whonnock in 1911 to build and operate a hall—the Ladies Hall. The hall was completed in 1912 and served our community for about half a century. In 1918 it was renamed Whonnock Memorial Hall in memory of those who did not come back from the 1914-1918 war. The building was demolished in 1979.



Children's pageant at Whonnock Hall, 1915



Ladies Club Hall, 1912.



The Ladies Club Hall in 1915.



1912. The stage in the hall. The "drop scene" was painted by Mary West (née Lee).

MAY 2005

SUNDAY	MONDAY	TUESDAY	WEDNESDAY	THURSDAY	FRIDAY	SATURDAY
1	2	3	4	5	6	7
8	9	10	11	12	13	14
15	16	17	18	19	20	21
22	23	24	25	26	27	28
29	30	31				

A BIT OF WHONNOCK HISTORY

Whonnock: The Front



Left: "The Front" of Whonnock, around 1925. Facing east on River Road: to the left the post office and Fred Showler's store. On the right side of the road A. Graham's warehouse and store, built about 1912 (demolished in the 1970s). In the background, at the corner of Wharf Road and River Road, is Luno's store. River Road was the main road to Ruskin and Mission.

Below: Luno's store on River Road and Wharf Road. In the background Graham's store. In 1930 Luno's building was moved to the Lougheed Highway.

Below: Brian Byrnes walking to his car on a wintry day in 1945. To the left the post office. To the right is Graham's store, still active as Whonnock General Store under new management. Luno's has been moved out of sight to Lougheed Highway.



JUNE 2005

SUNDAY	MONDAY	TUESDAY	WEDNESDAY	THURSDAY	FRIDAY	SATURDAY
			1	2	3	4
5	6	7	8	9	10	11
12	13	14	15	16	17	18
19	20	21	22	23	24	25
26	27	28	29	30		

A BIT OF WHONNOCK HISTORY

Whonnock Elementary

THE FIRST SCHOOL in Whonnock was opened in 1885. It remained on the shore of the Fraser until 1909, when a new school was completed where Dowco is today on 272nd Street and 100th Ave.



This photo was taken at the old school around 1900.



Whonnock School, June 1912. Top row: Fred Lee, Charlie Black, Bob Watson, Harold Armes, Gudrun Lee, and Miss Cowie.
Middle row: Marie Anderson, Gilbert Lee, and John Nelson.
Front row: Lulu Lee, Jean Black, Henry Lee, Henry West, and Kenneth Garner.



1913. Whonnock School fire drill (the building at the back is not the school).

JULY 2005

SUNDAY	MONDAY	TUESDAY	WEDNESDAY	THURSDAY	FRIDAY	SATURDAY
					1	2
3	4	5	6	7	8	9
10	11	12	13	14	15	16
17	18	19	20	21	22	23
24	25	26	27	28	29	30
31						

A BIT OF WHONNOCK HISTORY

The House with the Monkey Puzzle Tree

10016-272nd Street is where the Armes family lived from 1910 until 1919. The magnificent “monkey puzzle” tree was so small that a little boy could jump over it. Shortly after Mrs. Armes died, in 1919, they moved away to the Cariboo.



The Armes house and the monkey puzzle tree today.

AUGUST 2005

SUNDAY	MONDAY	TUESDAY	WEDNESDAY	THURSDAY	FRIDAY	SATURDAY
	1	2	3	4	5	6
7	8	9	10	11	12	13
14	15	16	17	18	19	20
21	22	23	24	25	26	27
28	29	30	31			

A BIT OF WHONNOCK HISTORY

The Norwegians



10225 272nd Street. The house, built for Axel Lee survives till the present day.



Georgina Fletcher
née Lee.



Ole Lee (Jr.), Frida Johansson, and children, 1913.

NORWEGIANS played an important role in the formative years of Whonnock and beyond. They were people who took an active part in shaping our community and were present in social affairs.

Starting in the late 1800s, Norwegian families found their way to Whonnock. First came the Andersons and the Nelsons (Nilsen), followed quickly by the Lees (Lie) and later the Knutsons.

Of a Whonnock school class of thirteen pupils, photographed in 1912, eight were children of Norwegians.



Axel Lee and his wife,
Anna Nelson.



Ole Lee Sr., his daughter Mary, and
her son and grandson.

SEPTEMBER 2005

SUNDAY	MONDAY	TUESDAY	WEDNESDAY	THURSDAY	FRIDAY	SATURDAY
				1	2	3
4	5	6	7	8	9	10
11	12	13	14	15	16	17
18	19	20	21	22	23	24
25	26	27	28	29	30	

A BIT OF WHONNOCK HISTORY

Marshall Luno's Magic Camera

In 1925 Marshall Luno made photographs with his panoramic camera of the solid-tired trucks that hauled logs down to the river.



Carl Nelson (driver), Ben Eaton (leaning on cab); Dave Kauffman (white shirt); Beatrice Luno; Hank Lee (dark shirt) and Art Nelson sitting on log. Marshall Luno also took the photographs of his store and "The Front" shown on the June page.



Although not in the same format this is probably also one of Luno's images.



Art Nelson (driver); Beatrice Luno (sitting); Edith Luno (mother of Beatrice); Dave Kauffman (leaning on cab); Ben Eaton (standing next to him). At back tire Carl Nelson (light shirt) and Hank Lee.

OCTOBER 2005

SUNDAY	MONDAY	TUESDAY	WEDNESDAY	THURSDAY	FRIDAY	SATURDAY
						1
2	3	4	5	6	7	8
9	10	11	12	13	14	15
16	17	18	19	20	21	22
23	24	25	26	27	28	29
30	31					

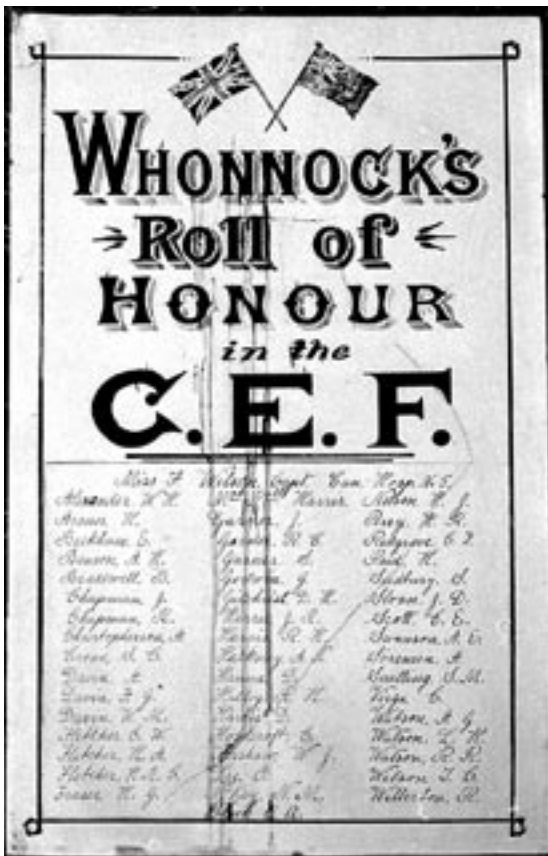
A BIT OF WHONNOCK HISTORY

Lest we Forget...1914-1918

ROBERT FLETCHER (centre photo) was one of the residents of Whonnock who did not come back from the battlefields in Europe. He fell in 1917. His name is one of ten mentioned on a bronze plaque, cast in 1921, now at Whonnock Centre.

The Whonnock Roll of Honour was created in 1916 to attract soldiers for the war.

As a public relations and recruiting exercise the 131st Battalion undertook a march through the Fraser Valley. On 5 April 1916 they marched from Haney to Mission with a short stop at the Whonnock school for lunch (photo).



NOVEMBER 2005

SUNDAY	MONDAY	TUESDAY	WEDNESDAY	THURSDAY	FRIDAY	SATURDAY
		1	2	3	4	5
6	7	8	9	10	11	12
13	14	15	16	17	18	19
20	21	22	23	24	25	26
27	28	29	30			

A BIT OF WHONNOCK HISTORY

Whonnock's Oldest Churches



The Catholic Church on the Whonnock Reserve. Demolished.



The little Norwegian Lutheran Church on the cemetery, built in 1905. Demolished. Drawing from memory by Mary Flatla.



St. Paul's, the original Anglican Church from 1891 to 1921, is now a residence at 10134-112th Street (below).



The United Church, formerly the Presbyterian Church, built in 1915.



DECEMBER 2005

SUNDAY	MONDAY	TUESDAY	WEDNESDAY	THURSDAY	FRIDAY	SATURDAY
				1	2	3
4	5	6	7	8	9	10
11	12	13	14	15	16	17
18	19	20	21	22	23	24
25	26	27	28	29	30	31

A BIT OF WHONNOCK HISTORY

WHONNOCK NOTES

1. Transcripts from the Fraser Valley Record (1908-1912)
News about Whonnock in the Mission newspaper
2. Cemeteries in Whonnock
The history of Whonnock's cemeteries
—includes cemetery records and transcriptions of the grave markers
3. The Trondheim Congregation
Our Norwegian settlers—minutes of the Lutheran Church in Whonnock
4. Through the Eyes of Brian and other Friends
Interviews, notes, and stories dating back to 1913
5. Whonnock 1897—John Williamson's Diary
One of the oldest records of daily life in Whonnock
6. Ferguson's Landing: George Godwin's Whonnock
A look at George Godwin's novel *The Eternal Forest*
7. Robert Robertson and Tselatsetenat
Whonnock's Scottish first settler and his family
8. A Name Index of the Whonnock Notes Series No. 1-7
Compiled by Eleanor Dempster
9. A Name Index of the Whonnock Community Association
Historical Project Summer 1985 Records
Compiled by Eleanor Dempster
10. The Family of Catherine & Edward Julius Muench
Catherine was the sister of Robert Robertson's wife
11. It was a Wonderful Life: Brian & Isabel Byrnes
In memory of two true Whonnockians

How to get copies of *Whonnock Notes*: Sue Schulze continues to have a stock of all *Whonnock Notes* handy at the Whonnock Post Office, providing easy access to anyone who would like to buy a copy. We owe her thanks for doing this—and much more—for the promotion of the history and heritage of Whonnock. If you are not planning a visit to the Whonnock Post Office to get your *Whonnock Notes* please order from Fred Braches, PO Box 130, Whonnock BC V2W 1V9. Phone (604) 462-8942. E-mail: braches@sprint.ca. On special order: *Records of the Whonnock Community Association's Historical Project, 1985*.